

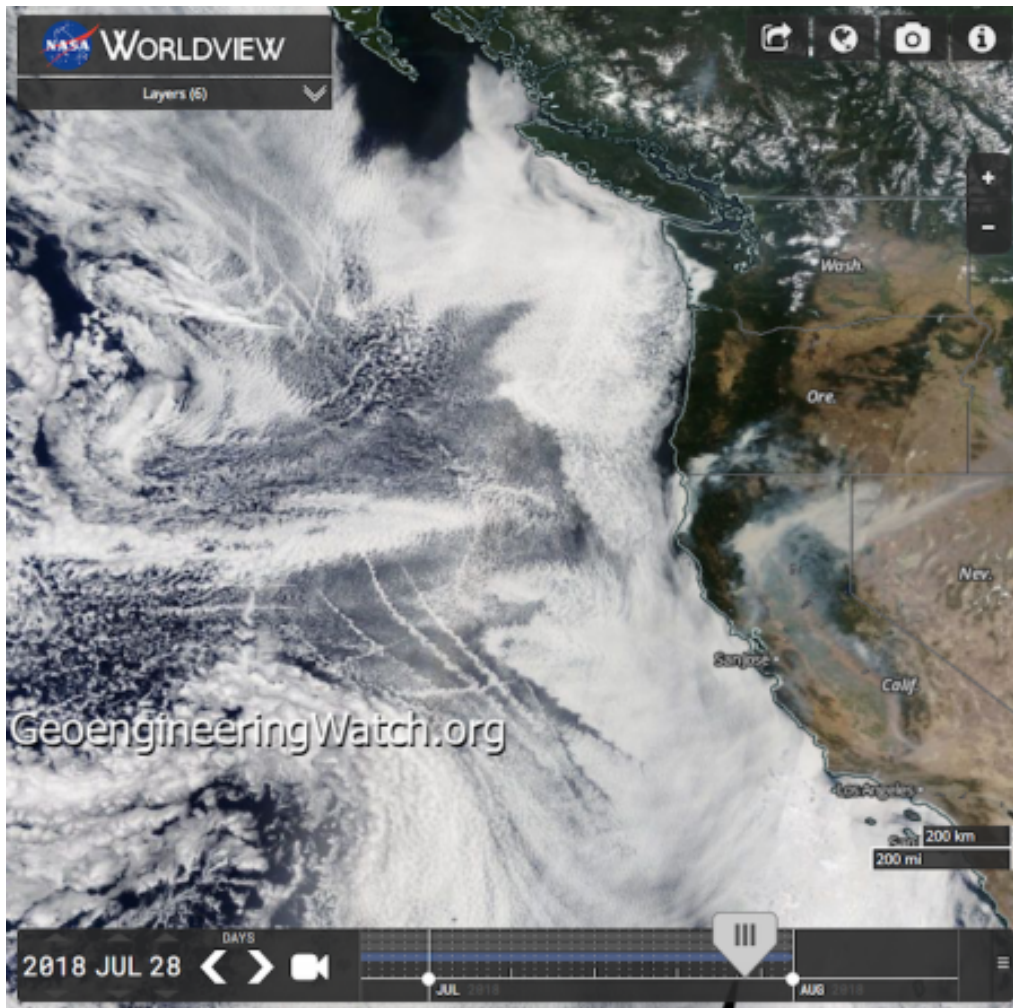
# Dane Wigington: Geoengineering Is Fueling Firestorm Catastrophes

[Dane Wigington: Geoengineering Is Fueling Firestorm Catastrophes](#)

by [Dane Wigington](#), [Geoengineering Watch](#)

July 30, 2018

Yet again forests in the [Western US are incinerating](#) as [the US east coast is anomalously wet and cool](#). All official sources are blaming the rapidly increasing extreme and deadly wildfire behavior on global warming alone, but is that the full truth? What factors are “official sources” not informing us of in regard to the increasingly destructive wildfires?



The NASA satellite image above reveals massive climate engineering operations being carried out over vast expanses the Pacific ocean off of the US west coast. The geoengineering / solar radiation management operations [completely disrupt the hydrological cycle](#) and thus fuel [drought and fires](#) (a scenario [which has been ongoing](#)). The image was captured on Saturday, July 28th, 2018. This happened to be the day that a [long planned climate engineering awareness and call to action event](#) had to be canceled in Redding, California, due to the Carr fire. Smoke from the Carr fire is clearly visible on the NASA satellite image.

Though there are countless forms of human activity damaging the climate and biosphere, illegal [global climate engineering / solar radiation management operations](#) are a [primary causal factor fueling catastrophic wildfires](#) all over the globe (which official sources are not disclosing). Climate

engineering is completely disrupting the hydrological cycle, triggering [increasing dry lightning](#), [destroying the ozone layer](#), contaminating soils, and covering everything at ground level with an [incendiary dust](#) (due to the [fallout from atmosphere spraying programs](#)). The 10 minute video below elaborates on the direct effect geoengineering operations are having on forest fires, their behavior and their frequency. Geoengineering is nothing less than weather warfare.

The Carr Fire in Redding, California, my hometown, is one of the latest catastrophic infernos to erupt.



A fully engulfed structure along HWY 299 near Redding California. Photo credit: AP/Noah Berger

Other recent western infernos also confirm the impact of climate intervention operations. The satellite animation below was recorded on October 11th, 2017, it is important to examine carefully. Anomalous, counter-directional and extreme wind patterns over the core wildfire region was a major contributing factor in the firestorm cataclysm that occurred in the Santa Rosa region of California . All official sources continue to ignore and omit any discussion of the ongoing

illegal [climate engineering operations](#).



The climate engineering atrocities are a primary factor in the equation of [exponentially increasing forest fires](#) and fire intensity.



Forest fire, US West Coast. Photo credit: Rebecca Boatman

All around the world [forests are incinerating](#) at an ever more rapid rate, if the current trajectory of biosphere collapse continues, these forests are not coming back.

All of us must work together in the effort to fully expose and halt the ongoing climate engineering / weather warfare assault. How? By circulating [credible data](#) from a credible source. [Make your voice heard](#) in this all important battle.

[DW](#)



[[TCTL](#) editor's note: The commentary below was added to this



*[“Geoengineering Is Fueling Firestorm Catastrophes”](#) post in response to many sensationalized narratives and conclusions that are being circulated about the creation and / or causes of the recent and ongoing catastrophic California firestorms.]*

How do we expose and halt the catastrophic global climate engineering assault? We need to stand on solid verifiable ground in regard to the data and conclusions we share, or we will lose all credibility in this most important battle for the greater good. We must not give in to and indulge in implausible speculation that by its very nature provokes disbelief which can only weaken our strategic position as we expose the very real and terrible crimes being perpetrated against our dying planet. Are recent and current California fires behaving in unprecedented ways and burning at exceptionally high temperatures? Yes. Are there reasons to believe the public is not being informed of key core issues that are directly related to the exponential increase in global forest fires? Yes. Does available data make clear that climate engineering in countless ways set the stage for the firestorm nightmares? Without question.

All this being said, in regard to the recent and ongoing California firestorms there are a great many baseless claims circulating on the internet that should cause us all to take immediate pause. These narratives include the suggestion that everything from laser beams to military incendiary bombs were used to cause/create recent and ongoing catastrophic fires. Though laser and directed energy weapons do exist in some forms

(<https://www.airforcetimes.com/news/your-air-force/2016/06/25/air-force-has-directed-energy-weapons-now-comes-the-hard-part/>) ,there is no documentation whatsoever to confirm any sky to ground laser / directed energy platform is even remotely capable of causing massive and instant vaporization of countless structures over vast expanses. If such instant and extreme destruction were to occur (from massive laser /

energy beams, spiraling down from the sky in the middle of the night), wouldn't they have been seen by many? If such instant destruction technology does exist, and was used, why is there so much film footage of extreme wind and heat driven flames during the fires? Even if "directed energy" weapons of this caliber existed, and were used, CAL FIRE and thousands of residents would also have to be a part of such a coverup (which is completely implausible). Again, "laser / directed energy beams" (if a technology for such sky to ground decimation even exists) would be extremely visible.

Again, though some have referred to technology ([that does exist](#)) for extremely powerful laser and plasma beams, emission can only be produced from a ground based source with access to extreme levels of power. Any such powerful emission could not be produced from an overflying aircraft or a satellite. Even a flying full scale massive electrical power plant could not even begin to produce such an emission. And consider this, the most powerful laser beams (that have been created under [test conditions in ground facilities](#)) only existed for a trillionth of a second, and was only 2 millimeters wide, that's it. We must remember and consider that the California wind driven firestorms raged for days over extensive areas.

We must also stop to consider all the converging factors that are fueling the firestorm cataclysms. Record low fuel moisture contents ([directly connected to climate engineering](#)). Extreme and unpredictable wind conditions which can be directly connected to convection manipulation via jet aircraft dispersions of atmospheric aerosols (that are a core part of climate engineering operations). Accumulated incendiary dust (from climate engineering fallout) not only laying on the surface of forest foliage, but blowing in the winds around and above the fires. About the trees that are still standing in many photos of fire burn areas, green living trees are not prone to burning beyond the foliage and thinner branches. Green living trees WILL NOT fully incinerate (unlike dwellings

that contain no imbedded fuel moisture. In the case of the Santa Rosa firestorms many of the trees were Redwoods which are extremely fire resistant. All should take the time to look up more information on this, here is one sample link, FYI <http://forestschoolsbapet.blogspot.com/2013/04/redwoods-and-why-are-they-fireproof.html>

*Redwood trees have very thick bark which has a lot of water inside it. They also DO NOT have any pitch inside the trunks which is a very flammable substance found in many other trees. Another factor that helps to make the redwood trees fireproof is the fact that they do not have any of the resins that other trees like pine and the sap that the tree contains is made up of a majority of water also adding to the fireproofing ability.*

As already stated, other species of living and green trees would also not completely burn in the same manner as dried and fully cured building materials, not at all. Any that have ever tried to burn a completely green log in a fire will know this. Such a piece of "fuel" will not burn, the moisture is too impregnated in it. Ever put a paper cup filled with water in a fire? It, also, will not burn until the water boils out. The top of the cup burns down in pace with the water boiling out. Though the crowns of many pine species are, of course, highly combustible, the trunks and heavy branches are not (assuming the tree was alive when exposed to fire).

Back to the extreme heat and wind in these fires, like a bellows (or blower) for a forge, such extreme conditions can rapidly increase combustion and thus temperatures. Such extreme conditions and winds also scatter embers at unimaginable speed onto landscapes, into attics, eaves, etc, where the embers are fanned by the high winds into further combustion. Many older homes are built with extremely flammable materials, and many even with wood sub-floors which provide even more fuel at the critical base of dwelling fires.

Once subfloors have been burnt away, it could provide a cavity for some larger incombustible materials to fall into (such as porcelain sinks and toilets which extreme heat can also shatter).

*Structure fires are [much hotter and burn longer than a forest fire](#), and in many cases, what you find is a [single home ignites](#) and then like dominos falling other homes catch on fire. This is exactly what is occurred in California communities like Santa Rosa.*

As homes in close proximity ignite, all of the natural gas and / or propane supplied to homes adds further fuel to the wind blown furnace flames. Once fully ablaze, one home can ignite those immediately adjacent to it from the radiant heat alone. Homes across a street could be far enough away to be spared. Also, in scenarios where one home was in ashes next to another that did not burn, fire crews may have been present and actively watering down homes that had not yet ignited. Again, some next to other homes that were fully ablaze. In regard to the many badly burned vehicles, none of those making the "directed energy weapons" claims have bothered to mention the obvious, vehicles all have fuel tanks that radically accelerate and heat fires once the vehicle is fully ablaze. Those that have ever seen the remains of a vehicle that has fully incinerated along the side of a highway know that such vehicles look exactly like those in the firestorms.

I viewed a number of videos that show trees burning from the inside out, with some claiming this was proof of a laser weapon. This, also, is verifiably false. I have personally witnessed this exact scenario dozens of times over years of controlled burns on my own habitat reserve land, and fighting on the front line of wildfires that have occurred with staggering frequency on and near my acreage on the east side of Lake Shasta.. Any ember that settles into a hollowed out and decaying tree trunk will start such a fire as those



featured in videos claiming directed energy weapons were used. In several instances I have witnessed trees that had a rotted hollow at the base of the trunk which allowed air in, and embers. Once the rotted core ignited and burned up through the rotted center of the trees (completely rotted cores are now common in still living trees due to epidemic fungal infections in the forest), the trees literally looked like a blow torch with flames shooting out from the top. Please, don't believe me about trees with rotting cores burning from embers being common, ask any wild land firefighter how many times they have witnessed this phenomenon, it is extremely common. About the extreme heat and wind blown fire scenarios, again, if and when the heat plum from a fire is blowing along at ground level, combustibles one side or another may not be very effected from the directional flow of flames and heat that is being pushed in a particular direction due to the powerful winds. I am speaking from personal experience, not from speculation.

Some videos claimed brick or rock walls on some sides of some homes had disappeared, all of the "before and after" photos I have seen of this showed veneer walls of brick or rock, not walls that were actually constructed of these materials. Some of the same circulating videos claim that glass or aluminum could not melt in a wildfire, also false. Anyone that has ever put bottle into a hot camp fire and left it in the core of the coals all night knows better. The same with an aluminum can. And, again, to be clear, all the factors I mentioned in this report must be remembered. Yes, these fires are unprecedented, the heat and behavior is unprecedented, geoengineering is inarguably a major factor that set the stage. Fires are increasingly ignited in the worse possible locations at the worst possible times. Do these fires serve many agendas of those in power? Yes, absolutely, but we must still stand on solid ground with the data and conclusions we share with any breaking news story if we are to retain credibility.

I know many people who are now claiming no one died (and no one was injured) in Las Vegas, claiming that it was all staged. This narrative is also very harmful to the cause of credibility, insisting on the truth. I have a long term friendship with a former Green Beret who just lost two close colleagues in Las Vegas. Though the Las Vegas event also has countless unanswered questions, and appears to be anything but what official sources are telling us, people were injured and died. The notion that thousands of people, including emergency workers and hospitals, could all be in on some grand conspiracy theater, is not rational. Are we to believe that 9/11 was only a staged slaughter? That people did not die there? Let's all remember that those in power do not care how many they kill (collateral damage) to accomplish their agenda. Are we to believe the power structure would go to unimaginable lengths to avoid killing anyone in the Las Vegas event? Such a conclusion is also not rational given what we know about the demeanor of those in power. Many of the sites and sources pushing the "laser beams / directed energy beams" created the fires" false narrative are also propagating the "Flat Earth" and "global warming is a hoax" false and highly discrediting narratives.

William Thomas, a former member of the U.S. Navy Reserves, author of *Chemtrails Confirmed*, and the reporter who broke the "chemtrails" story for Environment News Service in 1998, observes that smoke is the bane of atmospheric lasers.

Directed-energy beams from military lasers are scattered and diffused by curtains of smoke, as well as water vapor (clouds) and rain.

And sandstorms. "Just look what happened during the U.S. invasion of Iraq when directed-energy sensors on aircraft, gunships and armor were shut down by blowing sand," this author of *Bringing The War Home* wrote to geoengineeringwatch.

"There is no way (unverified) space-based lasers could

penetrate the smoke over the vast U.S. wildfires with enough focused energy remaining to light a campfire.”

In the case of the [“global warming is a hoax” disinformation](#), this is in fact exactly the false narrative that the power structure and the geoengineers want. Why would anyone who claims to be fighting climate engineering / geoengineering push this kind of disinformation?

<https://www.geoengineeringwatch.org/toeing-the-line-for-big-oil-and-the-geoengineers/>

There is also the false and completely undocumented claim reporting “water vapor machines” are producing all the moisture for storms. Again, this narrative is verifiably absurd. <https://www.geoengineeringwatch.org/cooling-towers-climate-engineering-is-there-a-connection/>

[Credibility is so very critical](#) in the fight for the greater good. Logic, reason, and due diligence investigation must be a part of the equation, or hard earned credibility is completely sacrificed. The truth is more than alarming enough, we must make every effort to stand on solid and factual ground. Credibility is extremely difficult to earn, and so very easy to lose.

[DW](#)

[Connect with GeoEngineering Watch](#)

*Cover image credit: [YIvers](#)*