

# Hydrogel, Gel/Plastic and Rubbery Clots

## [Hydrogel, Gel/Plastic and Rubbery Clots](#)

*Are they all the same 'thing'?*

by [David Nixon](#), [Nixonlab](#)

March 2, 2024

Hi Y'all,

I think that the microscopic findings of hydrogel and structures, the macroscopic finding from a sample of live blood that shows an abnormal protein 'gel/plastic' and the rubbery white clots that have been found by embalmers for over two years are all showing the same pathology.

They all showed up at the same time, although the gel/plastic was not recognised until later I bet it would have been there if anybody had looked earlier.

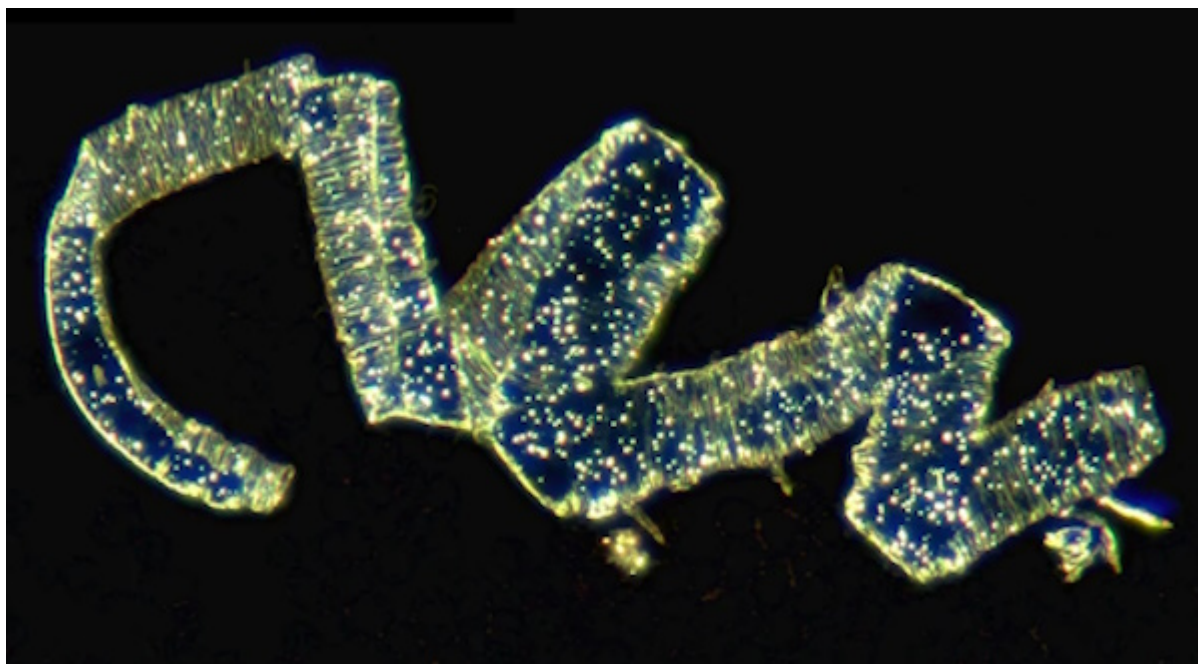
In all three situations I believe we are dealing with proteins that were soluble within hydrogels but have become insoluble and 'drop' out of solution.

We are all familiar with adding hot water to a sheet of gelatin and forming jelly.



Simplistically we are adding heat and forming a hydrogel. Imagine if we extracted heat and produced bits of gelatin sheet.

I think this, or something similar, is what we are observing microscopically. I don't think the structure below is in the blood in the finger but it develops from the time of the finger prick to the time of viewing. This is a darkfield image, photo-stitch, with 40x objective. I have seen structures with this texture on a few occasions but not often. Clearly there are large amounts of nanoparticles present. I had to turn the gain down which has meant the surrounding red blood cells have largely disappeared.



Macroscopically, the identified abnormal protein that was identified and investigated by Prof Arne Burkhart we have call 'gel/plastic', clearly it is not a gel or plastic but this name serves as a place sitter. Ron Norris and Michael Merrick and more recently Bill from Missouri have led the way with drawing their own blood and centrifuging it as per Ron (please see [Ron's Substack](#)). I have trialled successfully (and this is ongoing) Mike Merrick's protocol for the oral use of thieves' oil (LAC microscopy on Telegram). Unfortunately have not made time to write this up but will do so asap, promise!

Lastly, thoughts on the rubbery clots. I think these are mainly protein and form from the hydrogels after death, at least in the main part and I don't think that they are what is causing death per se. But clearly they are associated with what's going on.

So what do we do? Minimise EMF exposure. Avoid processed food. Ensure that drinking water is either distilled (then restructured and re-mineralised) or been through a reverse osmosis filter or is from a trusted non-contaminated source. Take regular activated charcoal, sodium citrate and follow the

discussions with regard to gel/plastic. Consider other supplements from trusted sources. Consider flu-like symptoms as signs of toxicity. Don't stick anything up your nose. Masks don't help.

[Connect with David Nixon](#)