

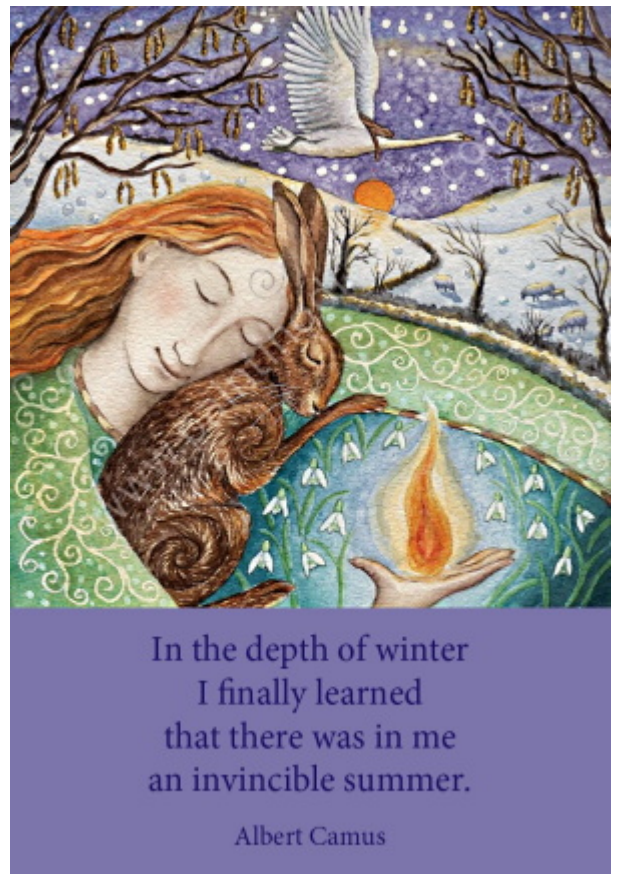
The Holistic Vision

[The Holistic Vision](#)

by [Elva Thompson](#)

November 7, 2022

The dimming of the light of
the spiritual worlds



According to Rudolph Steiner, the dimming of humanity's spiritual nature happened in the mid Atlantean epoch. I have no idea how long ago that was because time is relative, and also irrelevant in the investigation of spiritual worlds.

What we do know, is that at some time in our past, we lost our connection to the living spiritual realms that surround us, and lost the ability to see the elemental being within the form of living things.

We became asleep to spiritual reality...blind to the other half

of our being. With the fading of our spiritual light, we turned our attention exclusively to the physical world of sensation until it became our only world.

As a result, the energetic world that creates physical form, the magical faerie worlds, the wonderful impressions of early childhood, the archetypes of flowers and trees and all creatures great and small became dead to us...

.....because we became dead to them.

As the vision splendid faded, our higher fields of vibration withdrew. We became denser in form, imprisoned in the ivory tower of our arrogance and chained ever deeper into matter.

Barely conscious

Since the industrial revolution, we have been systematically de-sensitised and dumbed down. Organised religions have replaced meaningful spiritual experience calling it savage superstition, demonism and witchcraft.

The densification of our energy has accelerated in our modern digital age. We pride ourselves on our intellectual and technological prowess, and are so clever that we have disappeared up our own arseholes. We are stuck fast in the reductionist mindset, a perspective that believes that the whole is no more than the sum of its parts. This inverted view of reality has reduced ourselves and nature to nothing more than a mechanism. A market where human bodies have become repositories of spare parts, and many see man as nothing more than an accident of evolution.

Out of step

In the harmonious pattern of the cosmos there is one area that is out of balance and is deviating from Divine Law. This is the emotional state of mankind.

Cold intellect and rabid ego are so prevalent in today's

society, that most people are dead to any other world but their own physical bubble of existence. There is no room in their crammed life to have a spiritual experience.

They have no clue about the all pervading spiritual power that penetrates matter, and electromagnetically holds it together. All they can do is study the physical outer form and reduce it to its parts, but the inner energetic being that powers the form eludes them and remains forever inaccessible to their barren reductionist minds.

De-spiritualised

Whatever event caused the Separation of our spiritual and physical worlds, whether it be a catastrophe of immense proportions, or genetic interference by some alien species, it de-spiritualised our species by blocking out the other half of our being. Our spiritual eye has been blinded.

Sacred sympathy

When we overcome the natural identification with our lower, instinctual animal needs, and turn our attention to the unseen world of spirit, we will awaken to the fact that we are eternal beings. With the understanding comes a rush, an in-flooding of awareness, a sacred sympathy for all life that lifts us out of, and beyond, the materialistic, reductionist view of life... and we intuitively see that the whole is much more than the sum of its parts.

Holistic Vision

"There was a time when meadow, grove and stream. The earth and every common sight, to me did seem apparelled in celestial light. The glory and freshness of a dream.

It is not now as it hath been of yore; turn wheresoe'er I may. By night or day. The things that I have seen I now can see no more." Wordsworth

The few lines from Wordsworth show the longing of our spirits for the magic realms, spiritual worlds of beauty that have been lost by our ever increasing materialism.

If we are to experience the spiritual realm, we must employ our inner eyes, inner ears, and a subtler sense of thought without distraction. These practices will widen and intensify our imaginative thinking, and this will lead us to the understanding that there is divinity in all manifested life, and our affinity with nature is an echo of our connection to the whole.

Amazing things happen when we turn our attention inward. We discover that we do have a Higher Self; A quiet mind and its vibration is the gateway to wholeness.

The quiet mind is the magic portal through which we can pass into eternal spiritual realities. The gateway that shows us that we are far more than a physical body. We are divine in essence and that droplet of divinity cannot be extinguished when the worn out body, the house of our spirit crumbles and dies. We are eternal beings.

“You will never enjoy the world aright till the sea itself floweth in your veins, till you are clothed with heavens and crowned with stars.” Traherne.

The coming storm

We live in momentous times of change. We only have to look around at our world, a realm clouded with fear where violence seems to have the loudest voice. These are the times in which we live and the spiritual signposts point to chaos ahead.

So, dear friends, let us not think of our lower, limited self defined by our ego and personality. Instead let us fix our attention on our higher self which transcends the sense world and unites us with the timeless, eternal power of the Divine.



“Come to the edge of the precipice,” He said.

“No, we afraid.”

“Come to the edge of the precipice,” He said again.

They came. He pushed them and they flew.

Much love to you all.

Elva Thompson was born in England in 1947 and moved to Rosebud Lakota reservation in 1987. She is the author of the Heartstar Series; Book One: *The Key made of Air*, Book Two: *The Gates to Pandemonia*, and Book Three: *Walking In Three Worlds*. Her other interests include organic gardening, ancient phonetic languages, sonic sound and their application in the healing arts. She is also a medical intuitive and teaches sonic re-patterning using sound, colour, and essential oils. Elva Thompson is on Amazon Author Central @ [amazon.com/author/heartstar](https://www.amazon.com/author/heartstar)

[Connect with Elva Thompson](#)

cover image credit: [knollzw](#)